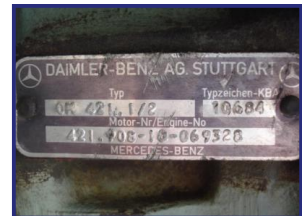




Lancaster Road, Carnaby Industrial Estate, Bridlington, East Yorkshire, YO15 3QY, UK

Truck Dismantling & CKD | Truck Engines & Truck Spare Parts | FCL-LCL Container Loading & Shipping

Mercedes V6 Bus Engines



£POA

Mercedes V6 Bus Engines M. W. Tractors Regularly Supply A Range Of Mercedes V6 Bus Engines. 220 bhp Manual Engine Type (OM421) All of our Mercedes V6 Bus Engines are visually inspected (and tested if possible) by trained individuals prior to dispatch.

Product Details	
Category/Type	Engines
Make/Model	Mercedes V6 Bus Engines
Year	-
Mileage	-
Stock Ref	MERENG-0204

Tel: +44 (0)1262 679639 | Email: sales@mwtractors.com | Fax: +44 (0)1262 677540

www.mwtractors.com